

Knowledge based prediction of toxicity

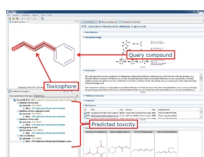
Written by David Watson

Thursday, 18 April 2013 13:58 - Last Updated Thursday, 17 October 2013 14:57

David Watson gave this presentation at the "Addressing toxicity in drug discovery" workshop during the ACS National Spring Meeting 2013

Summary

Toxicity of drug candidates is a major cause of expensive, late stage failure in pre-clinical and clinical development. In this presentation, David introduced Lhasa's world-leading technology for knowledge-based prediction of key toxicities. Using data from published and donated (unpublished) sources, their Derek Nexus tool identifies structure-toxicity relationships that alert users to the potential of compounds causing toxicity.



A copy of David's slides is available as a [PDF](#) file.