

Structure-based drug discovery in Shanghai Hengrui

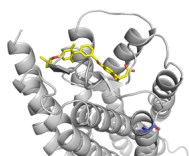
Written by Jerry Hu

Thursday, 18 December 2014 10:08 - Last Updated Wednesday, 30 August 2017 15:08

Dr Qiyue (Jerry) Hu gave this presentation at the International Symposium on Compound Design Technologies held in Shanghai, China on 21 November 2014.

Abstract

Hengrui Pharmaceutical Co. is one of the top research-based Chinese pharmaceutical companies. Shanghai Hengrui is its major R&D center. My talk will use data from real drug discovery projects to illustrate how Structural-Based Drug Discovery (SBDD) is practiced in Shanghai Hengrui.



You can download this presentation as a [PDF](#) .